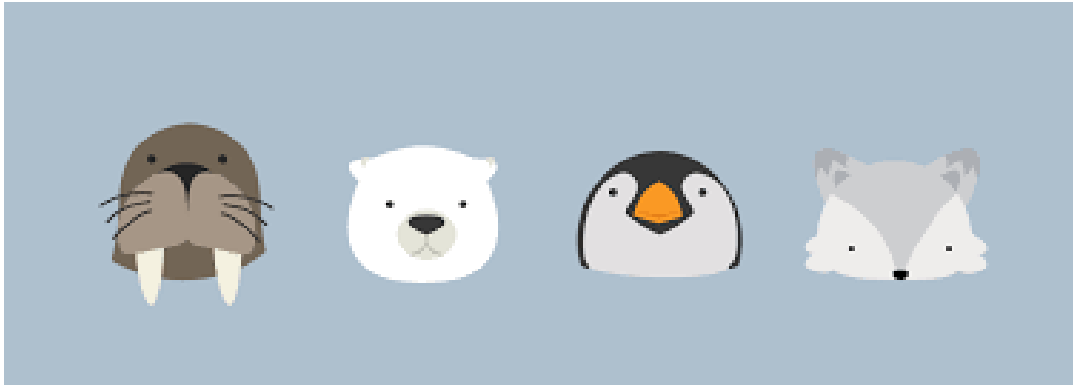


HEADTEACHER
Miss J Moore
Aldbury C of E Primary and Nursery School
Stocks Road
Tring
HP23 5RT
Tel: 01442 851240
admin@aldbury.herts.sch.uk



Aldbury C of E Primary and Nursery School



Polar Explorers Autumn 2 2022

This half term the class topic will be all about the Polar Regions, polar animals, winter and Christmas time.

Areas of Learning

Literacy: Leaf, Polar Bear What Can You Hear, Nativity, Jolly Postman at Christmas, Stickman

Maths: Shape, Pattern, Measures

Physical Development: PE Monday Morning with Miss Vardy Real PE and Friday PM Games with Game On

Understanding the World: Polar Regions, Remembrance Day, Bonfire Night, Winter, Freezing and Melting, Christmas around the World.

Expressive Arts and Design: Collage polar bears, Christmas crafts, Chalk firework pictures, making poppies, snowflakes.

How to support your child at home

- Sharing your child's Little Wandle book at home (children will be confident to read this book as we have shared it in class 3 times).
- Sharing quality picture books and reading for pleasure whenever possible to foster a love of reading- please see Class 1 library in the outside area
- Using balance scales, letting children handle money, measuring length, shape hunts, making patterns.
- Singing nursery rhymes and familiar songs (many on youtube)
- Wow moments from home or post any achievements on your child's Class Dojo portfolio page.
- Using playdough, completing jigsaw puzzles, using sand and water.

Curriculum Enhancements:

Secret Storyteller, Stay and Plays, Polar Express Wow Day

Stay and Play Dates on the school online calendar-it will be before pick up this time.

Animal Encounter in school about Zola the Elf travelling around the world- See

Zoolab.co.uk for more information

Key Vocabulary

Literacy	Maths	UW-Science	Topic
Phoneme, grapheme, letter, word, formation, rhyme, initial sound, information book.	Measure, length, short, long, tall, weight, mass, heavy, light, fat, thin, compare, order.	Melting, freeze, water, weather, winter, ice, change of state, explore, curiosity, explain.	Polar, snow, ice, cold, world, map, explorer, Nativity, Bethlehem, Jesus, stable, born, angel, tradition, celebrate.

Home learning

Over this half term please pick a home learning task.

This will be photographed and put into the children's Learning Journal.

- Make some Christmas biscuits or cakes- weight the ingredients out
- Create a collage of an animal that lives in a cold place
- Explore melting and freezing at home
- Shape hunts around the home and out and about